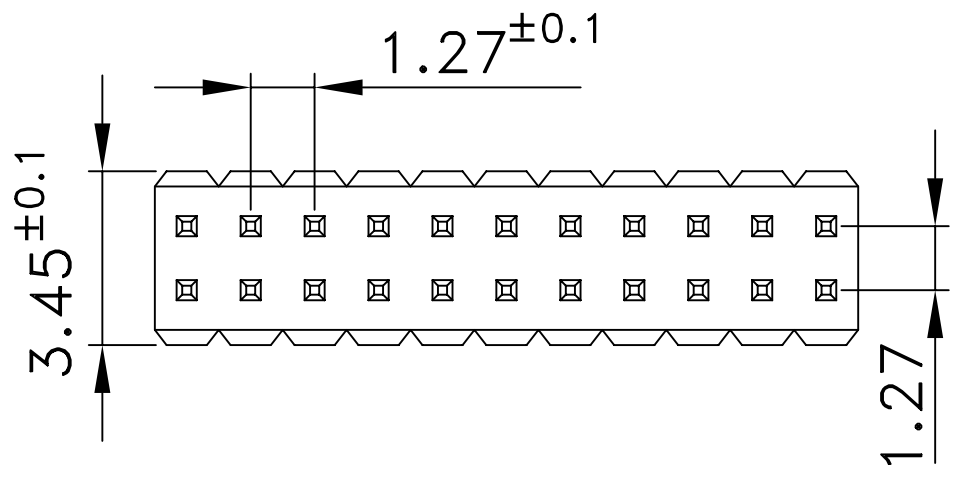


THIS DRAWING IS THE PROPERTY OF FIORTECH FACTORY AND IT CAN NOT BE USED, REPRODUCED AND OR LOANED TO THIRD PARTIES WITHOUT THE WRITTEN PERMISSION OF FIORTECH

CM-127-D-2x (XX) -1- (YY) - A/B/C

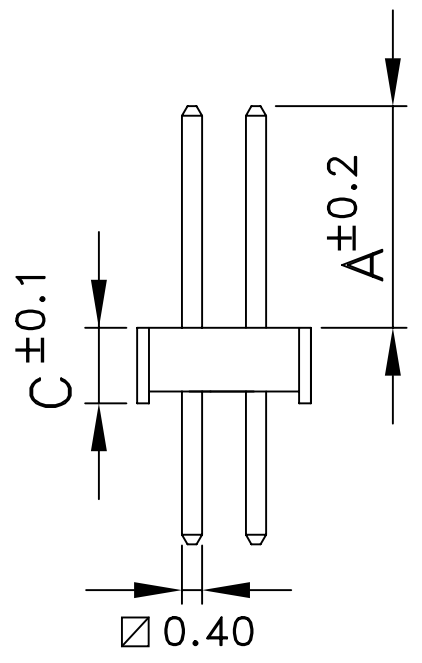
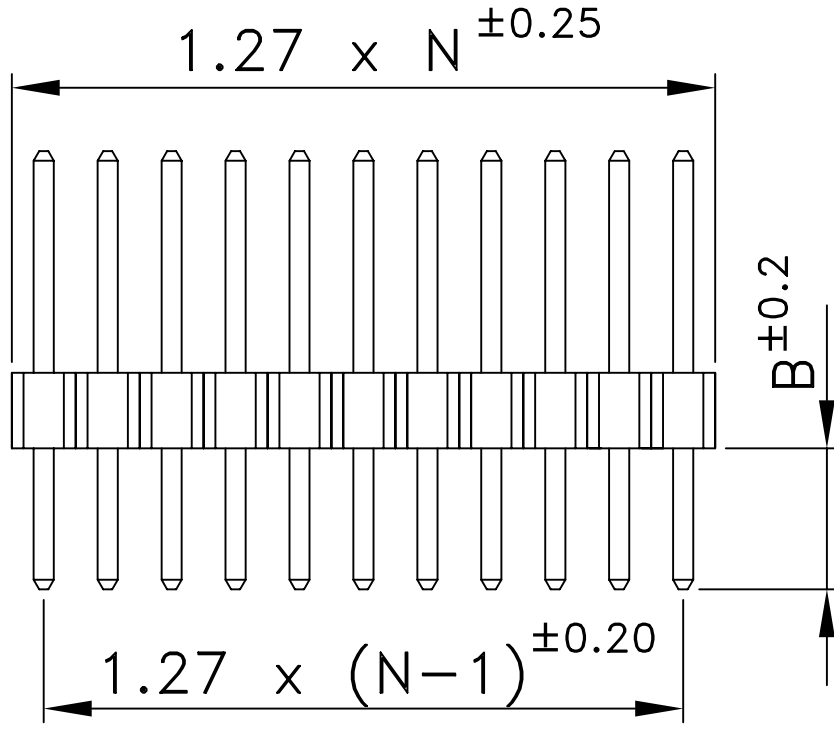
(XX) = N = number of contacts between 02 and 50

Put the desired dimensions for A, B and C in mm unit



**Plating:**

- (YY) = FG = gold flash (standard)
- (YY) = G1 = gold 0.12µm
- (YY) = G2 = gold 0.25µm
- (YY) = G3 = gold 0.50µm
- (YY) = G4 = gold 0.75µm
- (YY) = TF = pure tin flash
- (YY) = T1 = pure tin 5µm
- (YY) = FS = selective gold flash
- (YY) = S1 = selective gold 0.12µm
- (YY) = S2 = selective gold 0.25µm
- (YY) = S3 = selective gold 0.50µm
- (YY) = S4 = selective gold 0.75µm



QUESTO DISEGNO È DI PROPRIETÀ DELLA DITTA FIORTECH E NON PUO' ESSERE USATO, E/O CEDUTO A TERZI SENZA IL PERMESSO SCRITTO DELLA FIORTECH

	ELECTRICAL PROPERTIES		MECHANICAL PROPERTIES		INSULATOR HEIGHT AVAILABILITY (C)																				
	Current rate: 1 Ampere Insulation resistance: 5000MΩ min. Contact resistance: 10mΩ max. Dielectric Voltage: 500V AC for 1 minute		Operating temperature: -40°C + +105°C Peak temperature: 160° for 5+10 sec PCB recommended holes: ø0.65mm		<table border="1"> <tr> <td>1.0mm</td> <td>C=1.0</td> <td>pin</td> <td>±0.40</td> </tr> <tr> <td>1.5mm</td> <td>C=1.5</td> <td>pin</td> <td>±0.40</td> </tr> <tr> <td>1.7mm</td> <td>C=1.7</td> <td>pin</td> <td>±0.40</td> </tr> <tr> <td>2.0mm</td> <td>C=2.0</td> <td>pin</td> <td>±0.40</td> </tr> <tr> <td>2.5mm</td> <td>C=2.5</td> <td>pin</td> <td>±0.40</td> </tr> </table>		1.0mm	C=1.0	pin	±0.40	1.5mm	C=1.5	pin	±0.40	1.7mm	C=1.7	pin	±0.40	2.0mm	C=2.0	pin	±0.40	2.5mm	C=2.5	pin
1.0mm	C=1.0	pin	±0.40																						
1.5mm	C=1.5	pin	±0.40																						
1.7mm	C=1.7	pin	±0.40																						
2.0mm	C=2.0	pin	±0.40																						
2.5mm	C=2.5	pin	±0.40																						

INDEX	DATE	MODIFICATION OCCURRED		VISA
TOLERANCES FOR FREE DIMENSIONS				Scale
ANGULAR VALUES	Material Pin: copper alloy (standard brass) Insulator: Nylon 6T (UL94V0)			Date of creation
±2°	FROM 0.5 TO 3.0	FROM >3.0 TO 6.0	FROM >6.0 TO 10.0	10-03-06
	FROM >10.0 TO 18.0	FROM >18.0 TO 30.0	FROM >30.0 TO 50.0	Designer
	FROM >50.0 TO 80.0	FROM >80.0 TO 120.0	FROM >120.0 TO 180.0	Chiappini R.
	FROM >180.0 TO 250.0	FROM >250.0 TO 315.0	Plating See table	
	±0.125	±0.150	±0.180	Notes: ---
	±0.215	±0.260	±0.310	
	±0.370	±0.435	±0.500	
	±0.575	±0.650		

Part number: CM-127-D-1x (XX) -1- (YY) - A/B/C

Drawing number: \_\_\_\_\_

Index: \_\_\_\_\_

File: \_\_\_\_\_

Description: Double row straight male connector pitch 1.27mm

