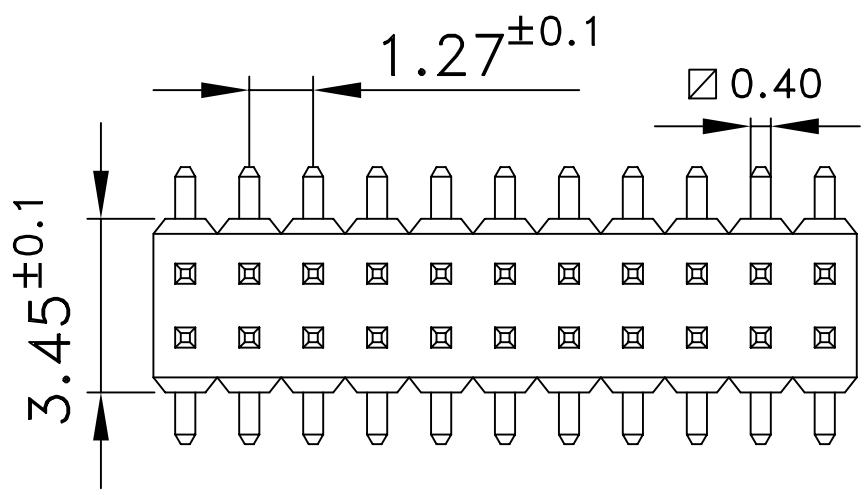
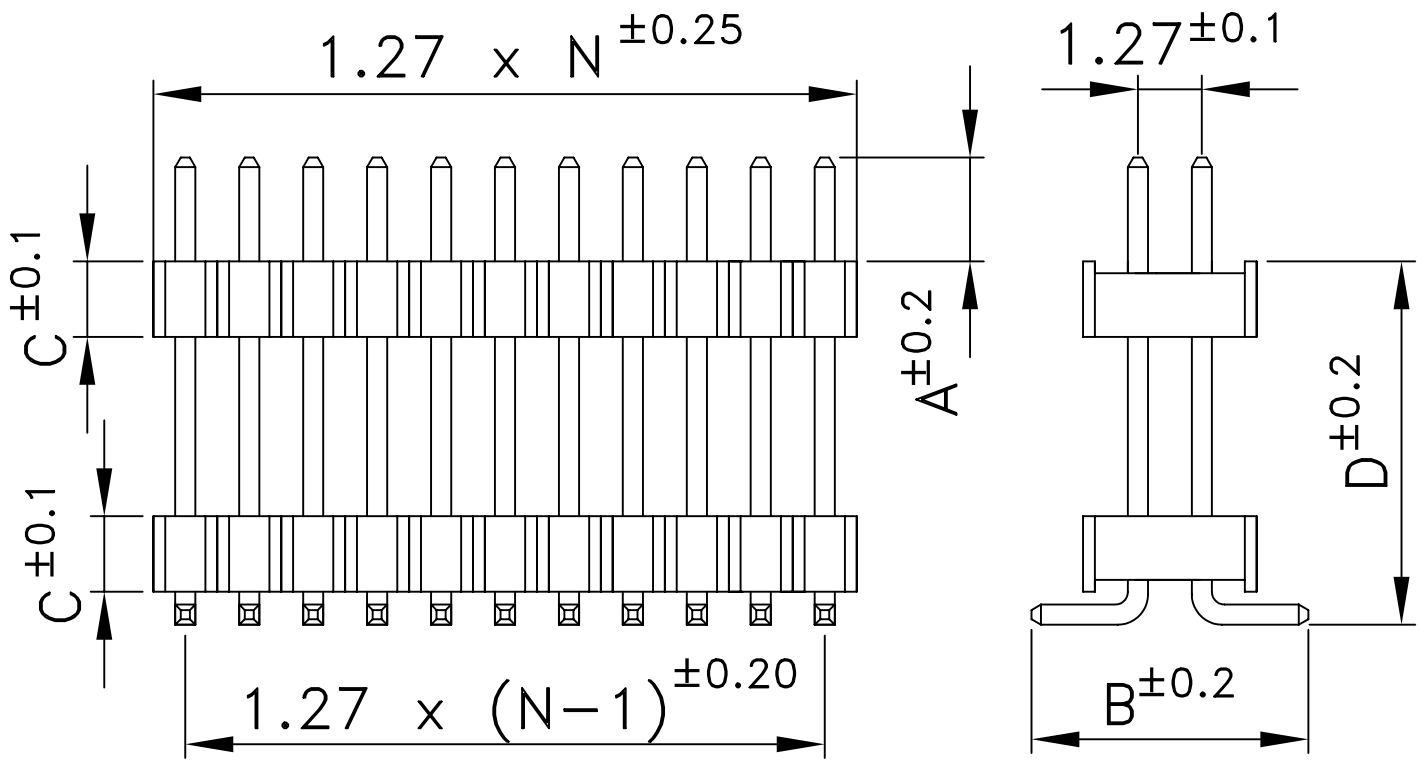


THIS DRAWING IS THE PROPERTY OF FIORTECH FACTORY AND IT CAN NOT BE USED, REPRODUCED AND OR LOANED TO THIRD PARTIES WITHOUT THE WRITTEN PERMISSION OF FIORTECH



**Plating:**

- (YY) = FG = gold flash (standard)
- (YY) = G1 = gold 0.12µm
- (YY) = G2 = gold 0.25µm
- (YY) = G3 = gold 0.50µm
- (YY) = G4 = gold 0.75µm
- (YY) = TF = pure tin flash
- (YY) = T1 = pure tin 5µm
- (YY) = FS = selective gold flash
- (YY) = S1 = selective gold 0.12µm
- (YY) = S2 = selective gold 0.25µm
- (YY) = S3 = selective gold 0.50µm
- (YY) = S4 = selective gold 0.75µm

(XX) = N = number of contacts between 02 and 50

Put the desired dimensions for A, B, C and D in mm unit

CM-127-S-2x (XX) -2- (YY) - A/B/C/D

QUESTO DISEGNO È DI PROPRIETÀ DELLA DITTA FIORTECH E NON PUÒ ESSERE USATO, E/O CEDUTO A TERZI SENZA IL PERMESSO SCRITTO DELLA FIORTECH

UNIT:mm	<b>ELECTRICAL PROPERTIES</b>					<b>MECHANICAL PROPERTIES</b>					<b>INSULATOR HEIGHT AVAILABILITY (C)</b>																		
	Current rate: 1 Ampère Insulation resistance: 5000MΩ min. Contact resistance: 20mΩ max. Dielectric Voltage: 500V AC for 1 minute					Operating temperature: -40°C + +105°C Peak temperature: 160° for 5±10 sec					<table style="width: 100%; border-collapse: collapse;"> <tr> <td>1.0mm</td><td>C=1.0</td><td>pin ∅0.40</td></tr> <tr> <td>1.5mm</td><td>C=1.5</td><td>pin ∅0.40</td></tr> <tr> <td>1.7mm</td><td>C=1.7</td><td>pin ∅0.40</td></tr> <tr> <td>2.0mm</td><td>C=2.0</td><td>pin ∅0.40</td></tr> <tr> <td>2.5mm</td><td>C=2.5</td><td>pin ∅0.40</td></tr> </table>					1.0mm	C=1.0	pin ∅0.40	1.5mm	C=1.5	pin ∅0.40	1.7mm	C=1.7	pin ∅0.40	2.0mm	C=2.0	pin ∅0.40	2.5mm	C=2.5
1.0mm	C=1.0	pin ∅0.40																											
1.5mm	C=1.5	pin ∅0.40																											
1.7mm	C=1.7	pin ∅0.40																											
2.0mm	C=2.0	pin ∅0.40																											
2.5mm	C=2.5	pin ∅0.40																											
INDEX	DATE	MODIFICATION OCCURRED										VISA Scale																	
<b>TOLERANCES FOR FREE DIMENSIONS</b>															Material: <u>Pin: copper alloy</u> <u>Insulator: Nylon 6T (UL94V0)</u>					Date of creation <u>16-02-06</u>									
ANGULAR VALUES	FROM 0.5 TO 3.0	FROM >3.0 TO 6.0	FROM >6.0 TO 10.0	FROM >10.0 TO 18.0	FROM >18.0 TO 30.0	FROM >30.0 TO 50.0	FROM >50.0 TO 80.0	FROM >80.0 TO 120.0	FROM >120.0 TO 180.0	FROM >180.0 TO 250.0	FROM >250.0 TO 315.0	Standard "B" dimension: 5.50mm Standard insulator height: 1.0mm ; 1.5mm ; 1.7mm ; 2.0mm ; 2.5mm					Designer Chiappini R.												
	±0.125	±0.150	±0.180	±0.215	±0.260	±0.310	±0.370	±0.435	±0.500	±0.575	±0.650																		

Part number: CM-127-S-2x (XX) -2- (YY) - A/B/C/D

Drawing number: \_\_\_\_\_

Index: \_\_\_\_\_

File: \_\_\_\_\_

Description: Dual insulator, double row SMD male connector pitch 1.27mm

